



Beacon Industries Inc., 12300 Old Tesson Rd. St. Louis, MO 63128
US & International Ph: (314) 487-7600

PIPE IMPACT GUARD SPECIFICATION GUIDE

Standard model numbers represent a flat wall & models that end in a 45 represent a 45 degree corner.

FINISH COATINGS

A trailing Y in the model number represents Powder Coat Yellow seen on page 1.

A trailing PG in the model number would represent Powder Coat Grey, would replace Y on page 1.

A trailing G in the model number would represent Galvanized seen on page 2.

Note: Powder Coat is highly durable, faster to produce and less expensive than Galvanized.

Steel Pipe Guards - BPGW Series

Model No.	Accommodate Pipe	Body Width	Body Depth	Height	Steel Thickness	Finish	Weight
1) BPGWM236-Y	2"	5"	4-3/18"	36"	3/16"	Powder Coated Yellow	28 lbs.
2) BPGWM236-45-Y	2"	5"	8 1/8"	36"	3/16"	Powder Coated Yellow	38 lbs.
3) BPGWM336-Y	3"	7"	5-15/16"	36"	3/16"	Powder Coated Yellow	36 lbs.
4) BPGWM336-45-Y	3"	7"	10-13/16"	36"	3/16"	Powder Coated Yellow	50 lbs.
5) BPGWM436-Y	4"	8"	7"	36"	3/16"	Powder Coated Yellow	42 lbs.
6) BPGWM436-45-Y	4"	8"	12 3/8"	36"	3/16"	Powder Coated Yellow	58 lbs.
7) BPGWM636-Y	6"	11"	9 3/4"	36"	3/16"	Powder Coated Yellow	56 lbs.
8) BPGWM636-45-Y	6"	11"	16-11/16"	36"	3/16"	Powder Coated Yellow	77 lbs.
9) BPGWM836-Y	8"	13"	11-15/16"	36"	3/16"	Powder Coated Yellow	66 lbs.
10) BPGWM836-45-Y	8"	13"	19-13/16"	36"	3/16"	Powder Coated Yellow	92 lbs.
11) BPGWM1036-Y	10"	15"	14 1/8"	36"	3/16"	Powder Coated Yellow	77 lbs.
12) BPGWM1036-45-Y	10"	15"	23-1/16"	36"	3/16"	Powder Coated Yellow	106 lbs.
13) BPGWM1236-Y	12"	17"	16-5/16"	36"	3/16"	Powder Coated Yellow	87 lbs.
14) BPGWM1236-45-Y	12"	17"	26-3/16"	36"	3/16"	Powder Coated Yellow	120 lbs.
15) BPGWM246-Y	2"	5"	4-3/18"	46"	3/16"	Powder Coated Yellow	35 lbs.
16) BPGWM246-45-Y	2"	5"	8 1/8"	46"	3/16"	Powder Coated Yellow	48 lbs.
17) BPGWM346-Y	3"	7"	5-15/16"	46"	3/16"	Powder Coated Yellow	47 lbs.
18) BPGWM346-45-Y	3"	7"	10-13/16"	46"	3/16"	Powder Coated Yellow	64 lbs.
19) BPGWM446-Y	4"	8"	7"	46"	3/16"	Powder Coated Yellow	53 lbs.
20) BPGWM446-45-Y	4"	8"	12 3/8"	46"	3/16"	Powder Coated Yellow	73 lbs.
21) BPGWM646-Y	6"	11"	9 3/4"	46"	3/16"	Powder Coated Yellow	71 lbs.
22) BPGWM646-45-Y	6"	11"	16-11/16"	46"	3/16"	Powder Coated Yellow	99 lbs.
23) BPGWM846-Y	8"	13"	11-15/16"	46"	3/16"	Powder Coated Yellow	85 lbs.
24) BPGWM846-45-Y	8"	13"	19-13/16"	46"	3/16"	Powder Coated Yellow	117 lbs.
25) BPGWM1046-Y	10"	15"	14 1/8"	46"	3/16"	Powder Coated Yellow	98 lbs.
26) BPGWM1046-45-Y	10"	15"	23-1/16"	46"	3/16"	Powder Coated Yellow	135 lbs.
27) BPGWM1246-Y	12"	17"	16-5/16"	46"	3/16"	Powder Coated Yellow	112 lbs.
28) BPGWM1246-45-Y	12"	17"	26-3/16"	46"	3/16"	Powder Coated Yellow	154 lbs.

Model No.	Accommodate Pipe	Body Width	Body Depth	Height		Finish	Weight
29) BPGWM236-G	2"	5"	4-3/18"	36"	3/16"	Hot Dip Galvanized	30 lbs.
30) BPGWM236-45-G	2"	5"	8 1/8"	36"	3/16"	Hot Dip Galvanized	41 lbs.
31) BPGWM336-G	3"	7"	5-15/16"	36"	3/16"	Hot Dip Galvanized	39 lbs.
32) BPGWM336-45-G	3"	7"	10-13/16"	36"	3/16"	Hot Dip Galvanized	54 lbs.
33) BPGWM436-G	4"	8"	7"	36"	3/16"	Hot Dip Galvanized	45 lbs.
34) BPGWM436-45-G	4"	8"	12 3/8"	36"	3/16"	Hot Dip Galvanized	62 lbs.
35) BPGWM636-G	6"	11"	9 3/4"	36"	3/16"	Hot Dip Galvanized	60 lbs.
36) BPGWM636-45-G	6"	11"	16-11/16"	36"	3/16"	Hot Dip Galvanized	82 lbs.
37) BPGWM836-G	8"	13"	11-15/16"	36"	3/16"	Hot Dip Galvanized	71 lbs.
38) BPGWM836-45-G	8"	13"	19-13/16"	36"	3/16"	Hot Dip Galvanized	98 lbs.
39) BPGWM1036-G	10"	15"	14 1/8"	36"	3/16"	Hot Dip Galvanized	82 lbs.
40) BPGWM1036-45-G	10"	15"	23-1/16"	36"	3/16"	Hot Dip Galvanized	113 lbs.
41) BPGWM1236-G	12"	17"	16-5/16"	36"	3/16"	Hot Dip Galvanized	96 lbs.
42) BPGWM1236-45-G	12"	17"	26-3/16"	36"	3/16"	Hot Dip Galvanized	128 lbs.
43) BPGWM246-G	2"	5"	4-3/18"	46"	3/16"	Hot Dip Galvanized	38 lbs.
44) BPGWM246-45-G	2"	5"	8 1/8"	46"	3/16"	Hot Dip Galvanized	52 lbs.
45) BPGWM346-G	3"	7"	5-15/16"	46"	3/16"	Hot Dip Galvanized	50 lbs.
46) BPGWM346-45-G	3"	7"	10-13/16"	46"	3/16"	Hot Dip Galvanized	69 lbs.
47) BPGWM446-G	4"	8"	7"	46"	3/16"	Hot Dip Galvanized	57 lbs.
48) BPGWM446-45-G	4"	8"	12 3/8"	46"	3/16"	Hot Dip Galvanized	78 lbs.
49) BPGWM646-G	6"	11"	9 3/4"	46"	3/16"	Hot Dip Galvanized	76 lbs.
50) BPGWM646-45-G	6"	11"	16-11/16"	46"	3/16"	Hot Dip Galvanized	106 lbs.
51) BPGWM846-G	8"	13"	11-15/16"	46"	3/16"	Hot Dip Galvanized	91 lbs.
52) BPGWM846-45-G	8"	13"	19-13/16"	46"	3/16"	Hot Dip Galvanized	125 lbs.
53) BPGWM1046-G	10"	15"	14 1/8"	46"	3/16"	Hot Dip Galvanized	105 lbs.
54) BPGWM1046-45-G	10"	15"	23-1/16"	46"	3/16"	Hot Dip Galvanized	144 lbs.
55) BPGWM1246-G	12"	17"	16-5/16"	46"	3/16"	Hot Dip Galvanized	120 lbs.
56) BPGWM1246-45-G	12"	17"	26-3/16"	46"	3/16"	Hot Dip Galvanized	164 lbs.

SECTION 111214 – GARAGE PARKING ACCESSORIES

PART 1 - GENERAL

1.1 RELATED DOCUMENTS

- A. Drawings and general provisions of the Contract, including General Conditions and Division 01 Specification Sections, apply to this Section.

1.2 SUMMARY

- A. Section Includes:
 - 1. Pavement marking paint.
 - 2. Plastic wheel stops.
 - 3. Pipe impact guards – all pipes subject to vehicular impact in garage.

1.3 PREINSTALLATION MEETINGS

- A. Preinstallation Conference: Conduct conference at Project site.

1.4 ACTION SUBMITTALS

- A. Product Data: For each type of product indicated, include technical data, and tested physical and performance properties.
- B. Shop Drawings: Indicate pavement markings, lane separations, and defined parking spaces. Indicate, with international symbol of accessibility, spaces allocated for people with disabilities.

1.5 DELIVERY, STORAGE, AND HANDLING

- A. Deliver pavement marking materials to Project site in original packages with seals unbroken and bearing manufacturer's labels containing brand name and type of material, date of manufacture, and directions for storage.
- B. Store pavement marking materials in a clean, dry, protected location within temperature range required by manufacturer. Protect stored materials from direct sunlight.

1.6 PROJECT CONDITIONS

- A. Pavement marking Paint: Proceed with pavement marking only on clean, dry surfaces and at a minimum ambient or surface temperature of 55 deg F for water-based materials, and not exceeding 95 deg F.

PART 2 - PRODUCTS

2.1 PAVEMENT MARKING PAINT

- A. Latex, waterborne emulsion, lead and chromate free, ready mixed, complying with FS TT-P-1952, Type II, with drying time of less than 45 minutes.
 - 1. Colors:
 - a. White: General line striping and pavement marking.
 - b. Yellow: Walkways and caution areas.
 - c. Blue: Handicapped markings.

2.2 WHEEL STOPS

- A. Basis of Design: Model APWHLSTP, Barco Products, www.barcoproducts.com. Substitutions permitted subject to the requirements of Division 01.
- B. Solid, integrally colored, 96 percent recycled commingled postconsumer and postindustrial recycled plastic; UV stabilized; 4 inches high by 6 inches wide by 72 inches long. Provide chamfered corners, drainage slots on underside, and anchor plates for anchoring to substrate.

1. Compressive Strength: 3200 – 3800 lbs. / sq. in.
2. Density ASTM D792: 0.917 – 0.980 g/cc.
3. Flexural Modulus: 1.6 x 10 psi.
4. Hardness (Shore D): 65 Shore D.
5. Tensile Strength: 1470 – 1700 psi.

2.3 PIPE IMPACT GUARDS

- A. Basis of Design: Model BPGWM as manufactured by Beacon Industries, 12300 Old Tessen Road, St. Louis, MO 63128. Telephone: (314)487-7600. Substitutions permitted subject to the requirements of Division 01.
 1. Construction: Solid steel construction, minimum 3/16" thick, meeting the requirements of ASTM A36. Provide minimum of six, 5/8 diameter attachment holes per unit; locations as determined by manufacture.
 2. Size: To meet various standard and custom pipe sizes as indicated on drawings.
 3. Height: 36"
 4. Finish: Manufacturer's standard powder coat; safety yellow color.

PART 3 - EXECUTION

3.1 EXAMINATION

- A. Examine substrates, areas, and conditions, with Installer present, for compliance with requirements for installation tolerances and other conditions affecting performance of work.
- B. Proceed with installation only after unsatisfactory conditions have been corrected.

3.2 PAVEMENT MARKING

- A. Do not apply pavement-marking paint until layout, colors, and placement have been verified with Architect.
- B. Allow paving to age for 90 days before starting pavement marking.
- C. Sweep and clean surface to eliminate loose material and dust.
- D. Apply paint with mechanical equipment to produce pavement markings, of dimensions indicated, with uniform, straight edges. Apply at manufacturer's recommended rates to provide a minimum wet film thickness of 15 mils.

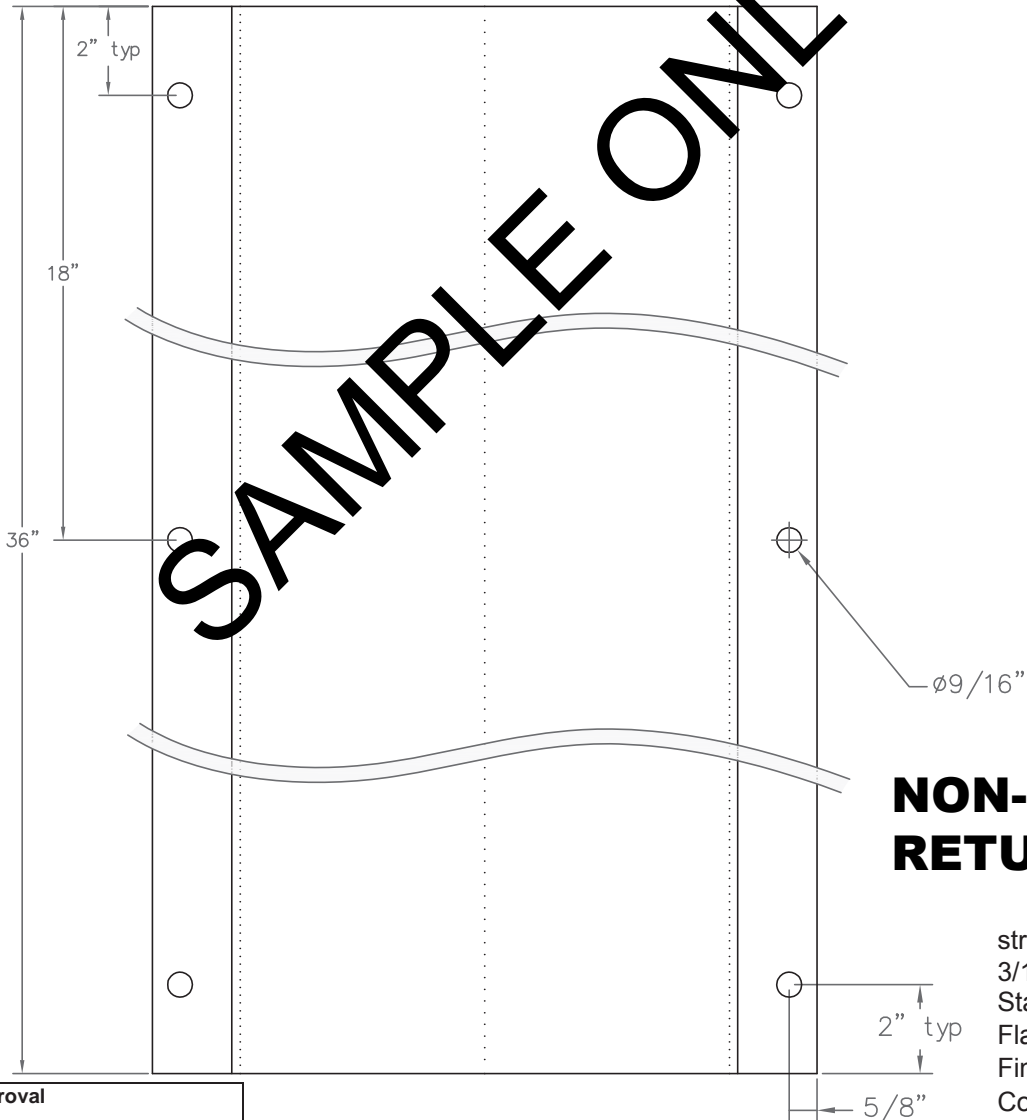
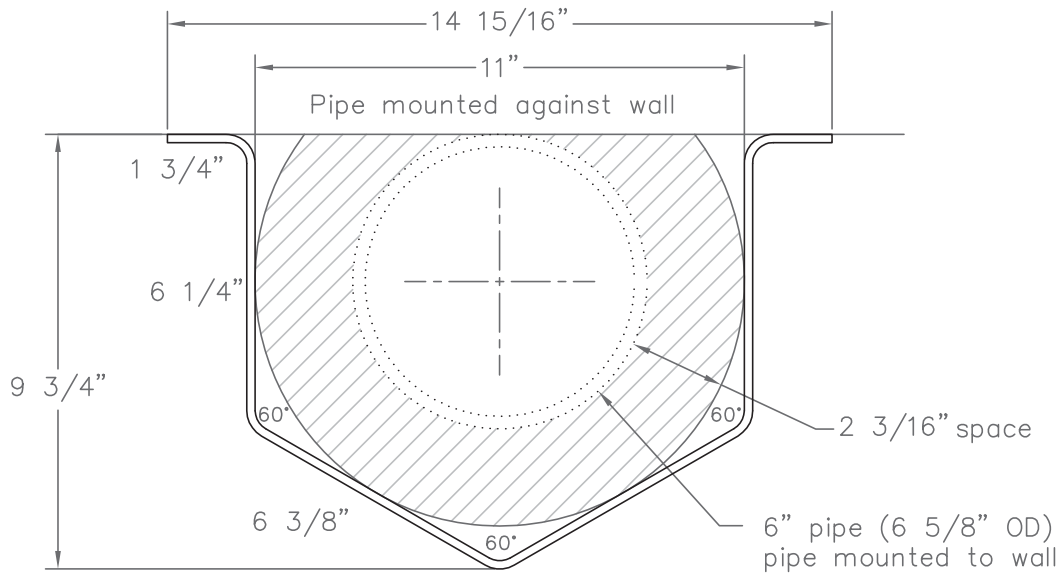
3.3 WHEEL STOPS

- A. Securely attach wheel stops to pavement with three anchor plates at one-quarter points. Securely install wheelstops by applying two part epoxy to anchor plates and concrete.

3.4 PIPE IMPACT GUARDS

- A. Securely attach pipe impact guard to wall with a minimum of six expansion anchors per guard. Paint anchor heads to match guard after installation.

END OF SECTION 111214



Approval

This includes my approval of design & dimensions.

Signed: _____

Date: _____

Beacon Industries, Inc. 12300 Old Tesson Rd. St. Louis, MO 63128

MODEL: Pipe Guard

PART: BPGWM636

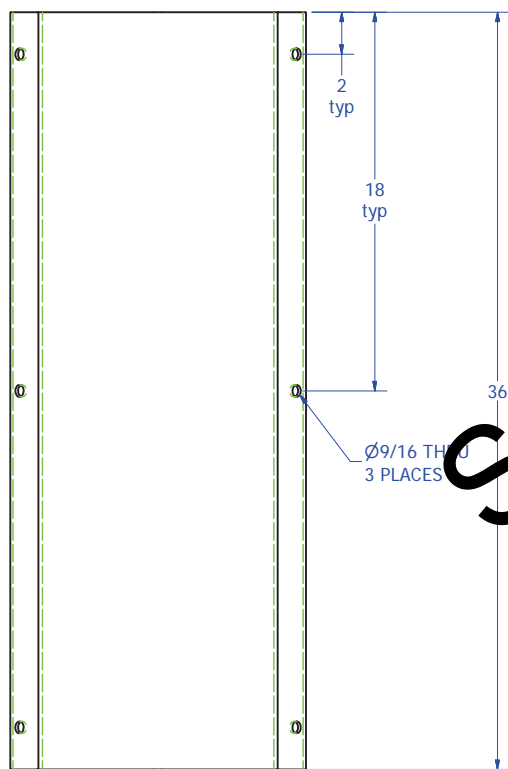
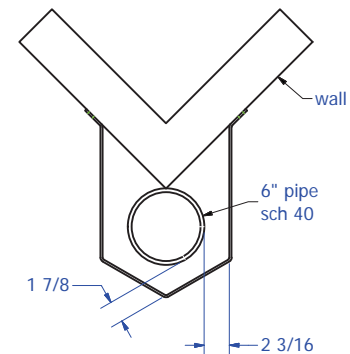
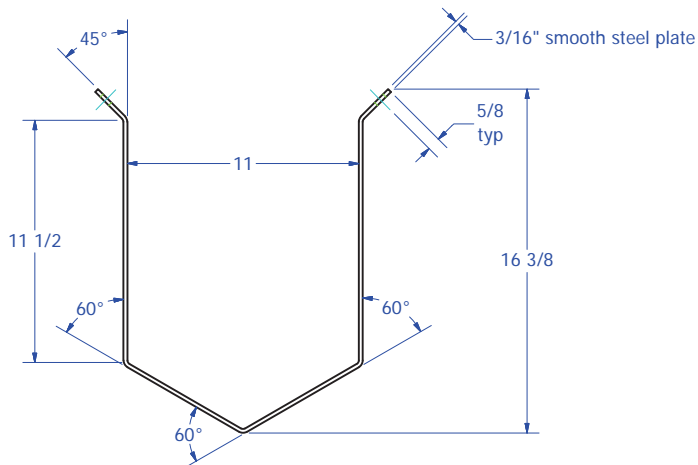
MATERIAL: 3/16 steel plate

DESC: Pipe Guard

WEIGHT: 55 lbs.

DRAWN: SRB

DATE: 11-30-10



SAMPLE ONLY

APPROVAL BLOCK

- ☐ _____ APPROVED AS IS FOR MANUFACTURING.
- ☐ _____ APPROVED AS IS FOR MANUFACTURING WITH REVISIONS NOTED.
- ☐ _____ REVISE AS NOTED AND RESUBMIT.

INITIAL

****NOTE:** Manufacturing will not commence until a signed approval drawing is received by Beacon Industries, Inc.**

SIGNATURE

DATE

NON-RETURNABLE

TOLERANCE SPECIFICATION (Unless Noted Otherwise)		DRAWN: SRB		DATE: 1/23/2018	
DIMENSION UNITS: (Inches)		CHECKED:		DATE:	
LINEAR:		SO #:		SHIP DATE:	
0.X ± 0.06 (1/16")		QTY:		CUSTOMER:	
0.XX ± 0.03 (1/32")		FINISH - PREPARATION:		FINISH - APPLICATION:	
0.XXX ± 0.010		FINISH - COLOR:		ESTIMATED WEIGHT:	
WELD:		+0.06/-0.00, ~		76.5 lbmass	
REMOVE BURRS AND SHARP CORNERS					

Beacon Industries, Inc.			
12300 OLD TESSON RD. ST. LOUIS, MO 63128			
TITLE			
SIZE	DWG NO	REV	
C	BPGWM636-45		

This document contains proprietary material and/or information which is owned by Beacon Industries, Inc. and which is given in confidence. The party accepting this document assumes custody thereof and agrees not to reproduce, to use in any way including manufacturing, or to divulge to a third party the document or details in here without permission from Beacon Industries, Inc.

FINISH: PREPARATION: SSPC-SP6
APPLICATION: POWDER COAT
COLOR: Safety Yellow